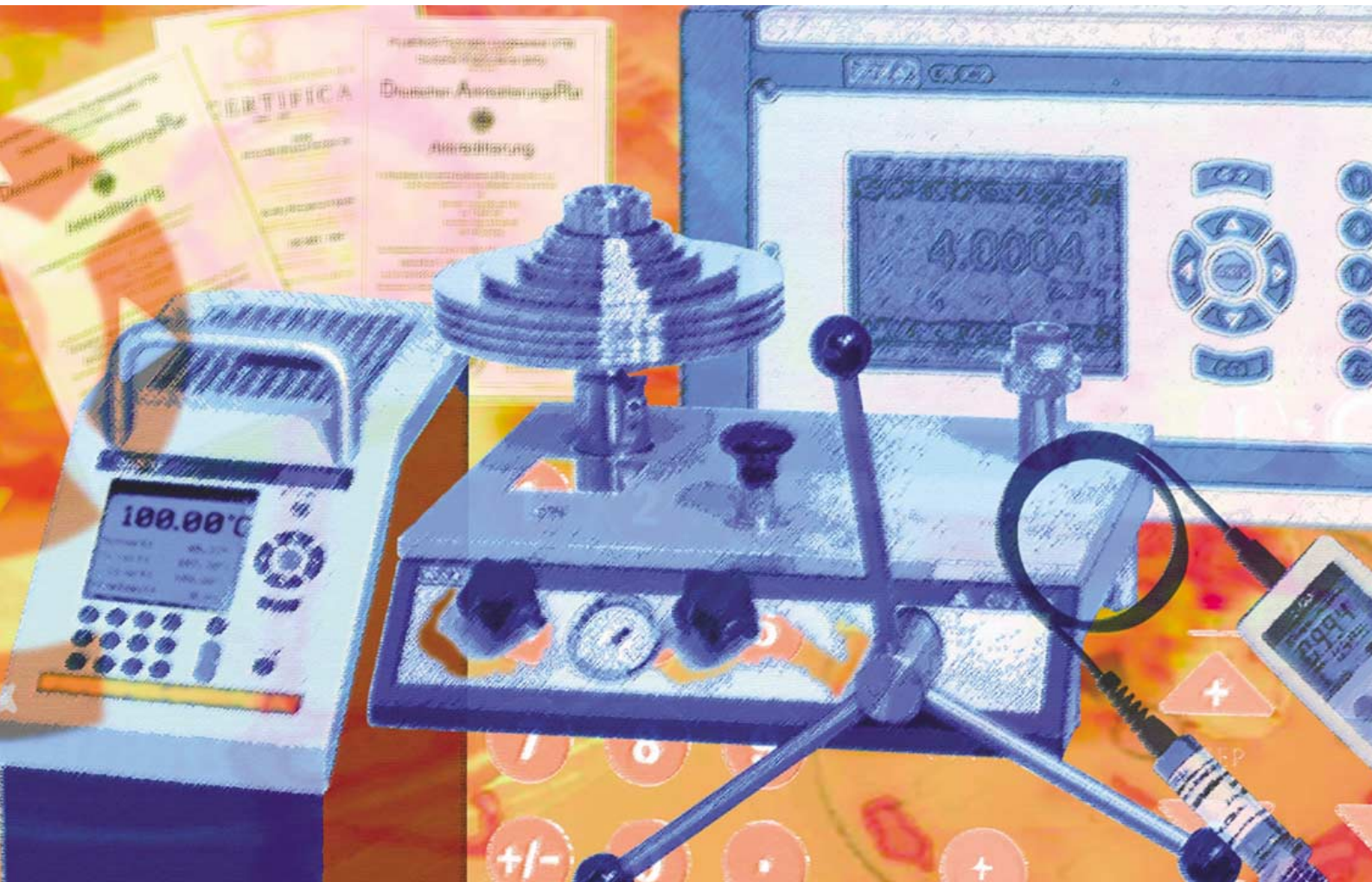


# Testing and Calibration Technology

## Pressure and Temperature



**WIKAL**

 Part of your business

# Contents

Precision pressure sensors	3
Hand-Held Pressure Calibrators and Portable Pressure Generation	4-5
Pressure Indicators, Calibrators and Controllers	6-7
Pressure Balances and Accessories Pressure Calibration systems	8-9
Hand-Held Thermometers and Portable Dry Well Calibrators	10-11
Calibration Baths	12
Mobile Service Systems (Pressure / Temperature)	13
Accessories and Services	14-15



Individual system solutions are developed in close cooperation with our customers



Temperature calibration laboratory at WIKA

## Leading the way worldwide

### Our knowledge for your success

In the course of the last five decades the name WIKA has become a symbol for sophisticated solutions in the field of pressure and temperature measurement.

Our top ranking in the world market today owes itself to the consistent devotion to ensure first class quality backed by more than 4,600 employees in the WIKA group of companies. Right from the outset more than 500 experienced distribution employees alone ensure that our customers are competently advised and individually serviced throughout the world.

### Certified quality

The WIKA quality assurance management system has been certified in accordance with DIN EN ISO 9001 since 1994. The quality and safety standards of our company meet the standard systems of several countries.

### Made by WIKA

The development and high-tech production in our owned modern production facilities (Germany, Brazil, Canada, China, India, Poland, Switzerland, South Africa and U.S.A.) is the best warranty for our flexibility.

And the end result: More than 30 million quality products are delivered year in, year out, in more than 100 countries. This means some 300 million WIKA measuring instruments in use all over the globe.

### WIKA product lines

- Electronic pressure measuring instruments
- Mechanical pressure measuring instruments
- Diaphragm seals
- Electrical temperature measuring instruments
- Mechanical temperature measuring instruments
- Testing and calibration technology



DKD accredited calibration laboratories for pressure and temperature



Designation	Pressure Transmitter with Digital Interface	Precision Pressure Transmitter with Digital Interface
<b>Model</b>	D-10 D-11 (flush diaphragm)	CPT 7000
<b>Application</b>	<ul style="list-style-type: none"> <li>■ Precise pressure measurement</li> <li>■ Basic calibration tasks possible</li> </ul>	<ul style="list-style-type: none"> <li>■ Precision pressure measurement</li> <li>■ Basic calibration tasks possible</li> </ul>
<b>Accuracy</b>	0.1 % (0.05 BFSL*) 0.05 % (0.025 BFSL*)	0.01%
<b>Pressure range</b>	0 ... 0.25 up to 0 ... 1000 bar -1 ... 0 up to -1 ... +24 bar 0 ... 0.25 up to 0 ... 16 bar abs.	0 ... 0.025 up to 0 ... 400 bar -1 ... 0 up to -1 ... +24 bar 0 ... 0.4 up to 0 ... 16 bar abs.
<b>Media</b>	Non-aggressive gases and liquids	Non-aggressive gases
<b>Special features</b>	<ul style="list-style-type: none"> <li>■ Oxygen version available</li> <li>■ Interfaces: RS-232, PROFIBUS-DP, CANopen</li> <li>■ Configuration software „Easy Com“</li> <li>■ Indicators available</li> </ul>	<ul style="list-style-type: none"> <li>■ High measuring rate (20 ms)</li> <li>■ 2 ppm resolution</li> <li>■ Interfaces: RS-232, RS-485</li> <li>■ Indicators available</li> </ul>
<b>Data sheet</b> www.wika.com	PE 81.33 (RS-232 Interface) PE 81.30 (PROFIBUS-DP) PE 81.31 (CANopen)	CT 07.01**

\* BFSL = Best Fit Straight Line

\*\* Data sheet in preparation.



Designation	Hand-Held Pressure Indicator	Process Calibrator
<b>Model</b>	CPH6200 CPH6200-S2 (2-Channel Version) CPH6210 (ATEX Version)	CPH6000
<b>Application</b>	<ul style="list-style-type: none"> <li>■ Accurate, mobile pressure measurement</li> <li>■ Basic calibration tasks (software assistance) possible</li> <li>■ Leak test</li> </ul>	<ul style="list-style-type: none"> <li>■ Precise pressure measuring</li> <li>■ On-site calibration (without PC)</li> <li>■ Pressure switch test</li> </ul>
<b>Accuracy</b>	0.2 % / 0.1 %	0.025 %
<b>Pressure range</b>	0 ... 0.1 up to 0 ... 1000 bar -1 ... 0 up to -1 ... +24 bar 0 ... 0.25 up to 0 ... 16 bar abs.	0 ... 0.25 up to 0 ... 1000 bar -1 ... +1 up to -1 ... +24 bar 0 ... 0.25 up to 0 ... 16 bar abs.
<b>Media</b>	Non-corrosive gases and liquids	Non-corrosive gases and liquids
<b>Special features</b>	<ul style="list-style-type: none"> <li>■ 1 Digital instrument for several pressure transmitters (Plug &amp; Play)</li> <li>■ Differential pressure measuring possible</li> <li>■ Integrated data logger</li> <li>■ Data logger evaluation software available</li> <li>■ USB &amp; RS-232 Interface</li> <li>■ Incl. factory calibration</li> <li>■ ATEX version available</li> </ul> <div>Ex</div>	<ul style="list-style-type: none"> <li>■ 1 Digital instrument for several pressure transmitters (Plug &amp; Play)</li> <li>■ Optional: the sensor can also be used remote via cable</li> <li>■ Calibration function</li> <li>■ Pressure switch test function</li> <li>■ USB &amp; RS-232 Interface</li> <li>■ Incl. factory calibration</li> </ul>
<b>Data sheet</b> www.wika.com	CT 11.01	CT 15.01



Designation	Test Pump	Spindle Pumps
<b>Model</b>	CPP30	HD250, HD1000 HD3000, HD5000
<b>Application</b>	<ul style="list-style-type: none"> <li>■ Easy pressure generation on-site, in laboratories or workshops</li> <li>■ Testing, adjustment and calibration of pressure measuring instruments of all kinds</li> <li>■ Pneumatic pressure and vacuum generation</li> </ul>	<ul style="list-style-type: none"> <li>■ Easy pressure generation on-site, in laboratories or workshop</li> <li>■ Testing, adjustment and calibration of pressure measuring instruments of all kinds</li> <li>■ Hydraulic pressure generation</li> </ul>
<b>Pressure range</b>	-0.95 ... +35 bar <sup>1)</sup>	0 ... 5000 bar
<b>Media</b>	Air	<ul style="list-style-type: none"> <li>■ Oil, water</li> <li>■ Other on request</li> </ul>
<b>Special features</b>	<ul style="list-style-type: none"> <li>■ Ergonomic handling</li> <li>■ Precise adjustment per fine adjustment valves</li> <li>■ Compact dimensions</li> <li>■ Little weight</li> </ul>	<ul style="list-style-type: none"> <li>■ Several models for different pressure ranges and media</li> <li>■ Ergonomic handling</li> <li>■ Precise adjustment per fine adjustment valves</li> <li>■ Compact dimensions</li> </ul>
<b>Data sheet</b> www.wika.com	CT 91.01	CT 91.01

<sup>1)</sup> Depends on the test-volume.



Designation	Portable Low-Pressure Calibrator	High-Precision Pressure Indicator
<b>Model</b>	CPC2090	CPG8000
<b>Application</b>	Mobile, battery operated calibration (respectively accurate pressure measurement) of low pressures (e.g. clean room)	<ul style="list-style-type: none"> <li>■ Precise up to precision pressure measuring possible (in 4 different pressure ranges)</li> <li>■ Software assisted calibration possible</li> </ul>
<b>Accuracy</b>	0.2 %	0.025 % / 0.01 % / 0.008 %
<b>Pressure range</b>	2 mbar up to 1000 mbar gauge pressure and differential pressure	0 ... 0.1 up to 0 ... 2500 bar -0.1 ... +0.1 up to -1 ... +25 bar 0 ... 1 up to 0 ... 16 bar abs.
<b>Media</b>	Air	Air, non-corrosive media
<b>Special features</b>	<ul style="list-style-type: none"> <li>■ Internal pressure generation (hand-operated)</li> <li>■ Portable with battery operation</li> <li>■ Second pressure range with factor 1/5 turn-down</li> <li>■ Incl. factory calibration certificate</li> </ul>	<ul style="list-style-type: none"> <li>■ Modular up to 4 sensors (different types possible)</li> <li>■ Can be easily retrofitted (modular concept)</li> <li>■ Optional with barometric reference</li> <li>■ RS-232 &amp; IEEE interface</li> <li>■ Calibration software EasyCal available</li> <li>■ Incl. factory calibration certificate</li> </ul>
<b>Data sheet</b> www.wika.com	CT 27.11	CT 25.05





Designation	Portable Low-Pressure Controller	Precision Pressure Controller	Precision High-Pressure Controller
<b>Model</b>	CPC2000	CPC8000-M / -L / -X CPC8000-DM / -DL / -DX (Dual-range Version)	CPC8000-H
<b>Application</b>	Supply-pressure independent calibration in the low pressure range (e.g. UHP pressure sensors)	<ul style="list-style-type: none"> <li>Fully automatic calibration</li> <li>Precision pressure measuring</li> <li>Leak test</li> </ul>	<ul style="list-style-type: none"> <li>Fully automatic calibration in high pressure range</li> </ul>
<b>Accuracy</b>	0.1 % 0.25 % (for 0 ... 1 mbar)	0.025 % / 0.01 % / 0.008 %	0.014 %
<b>Pressure range</b>	0 ... 1 mbar up to 0 ... 1000 mbar gauge pressure and differential pressure	0 ... 0.1 up to 0 ... 400 bar -0.1 ... +0.1 up to -1 ... +25 bar 0 ... 1 up to 0 ... 16 bar abs.	0 ... 600 up to 0 ... 1600 bar
<b>Media</b>	Ambient air	Clean, dry air or nitrogen	Hydraulic oil or water
<b>Special features</b>	<ul style="list-style-type: none"> <li>Internal, automatic pressure generation (electrical)</li> <li>Portable calibrator (only external power supply necessary)</li> <li>High speed controlling and high control stability</li> <li>Pressure steps can be determined</li> <li>RS-232 interface</li> <li>Incl. factory calibration</li> </ul>	<ul style="list-style-type: none"> <li>Version with 1 or 2 measurement range available</li> <li>Up to 5 internal test sequences possible</li> <li>High speed controlling and high control stability</li> <li>Control speed adjustable (Pressure switch test)</li> <li>RS-232 &amp; IEEE interface</li> <li>Calibration software EasyCal available</li> <li>Incl. factory calibration</li> </ul>	<ul style="list-style-type: none"> <li>High speed controlling and high control stability</li> <li>Bleed Priming-Function for an automatic filling of the control circuit</li> <li>Also large test volumen possible</li> <li>RS-232 &amp; IEEE interface</li> <li>Incl. factory calibration</li> </ul>
<b>Data sheet</b> www.wika.com	CT 27.51	CT 28.01	CT 28.05



Designation	Pressure Balance
<b>Model</b>	CPB5000
<b>Application</b>	<ul style="list-style-type: none"> <li>■ Primary standard for factory and calibration laboratories</li> <li>■ Mobile system for research or service laboratories (also on site)</li> </ul>
<b>Accuracy</b>	0.015 % of reading opt. 0.01 % of reading
<b>Pressure range</b>	-1 up to +100 bar pneumatic up to 1000 bar hydraulic High pressure up to 4000 bar* differential pressure version
<b>Media</b>	Non-corrosive gases or special oil
<b>Special features</b>	<ul style="list-style-type: none"> <li>■ High accuracy and long-time stability (re-calibration cycle: 5 years)</li> <li>■ Patented ConTect-System (Measuring system for the individual use)</li> <li>■ Factory calibration incl.</li> </ul>
<b>Data sheet</b> www.wika.com	CT 31.01 CT 31.51* (High pressure version)

\* Data Sheet in preparation.




Designation	CalibratorUnit
<b>Model</b>	CPU5000
<b>Application</b>	<ul style="list-style-type: none"> <li>■ Increases accuracy when working with the pressure balance</li> <li>■ Easy calibration of pressure transmitters</li> </ul>
<b>Basic package</b>	<ul style="list-style-type: none"> <li>■ Calculation of the accurate relation between pressure and mass loads</li> <li>■ Conversion into all common pressure units</li> </ul>
<b>Metrology Extension</b>	<ul style="list-style-type: none"> <li>■ Includes one measuring module for the ambient conditions (temperature, air pressure, humidity, density)</li> </ul>
<b>Transmitter Extension</b>	<ul style="list-style-type: none"> <li>■ Extension for transmitter calibration incl. power supply and multimeter for transmitter signal</li> </ul>
<b>Special features</b>	<ul style="list-style-type: none"> <li>■ No additional measuring instruments are needed</li> <li>■ Universal system for all kinds of pressure balances</li> <li>■ PC-independent system with an excellent price-performance ratio</li> </ul>
<b>Data sheet</b> www.wika.de	CT 35.01





Designation	Pressure Supply Case	Adjustment and Calibration Benches	Automatic Calibration Systems
<b>Application</b>	<ul style="list-style-type: none"> <li>■ Mobile pressure source</li> <li>■ Adjustment and calibration of pressure gauges</li> <li>■ Pressure regulated by adjustment valves</li> </ul>	<ul style="list-style-type: none"> <li>■ Test bench for production, test department, service, maintenance workshops and laboratories</li> <li>■ Testing, calibration and adjustment of pressure gauges of all kinds</li> </ul>	Test laboratory, calibration service companies, pressure transmitter manufacturers
<b>Accuracy</b>	(Depending on reference in use)	(Depending on reference in use)	Up to 0.008 %
<b>Pressure range</b>	-1 ... +35 bar (low pressure) 0 ... 200 bar (high pressure) other on request	-1 ... +400 bar (pneumatic) 10 ... 1600 bar (hydraulic)	Customised
<b>Media</b>	<ul style="list-style-type: none"> <li>■ Nitrogen / air</li> <li>■ Other on request</li> </ul>	<ul style="list-style-type: none"> <li>■ Nitrogen / air</li> <li>■ Oil or water</li> <li>■ Other on request</li> </ul>	<ul style="list-style-type: none"> <li>■ Nitrogen / air</li> <li>■ Oil or water</li> <li>■ Other on request</li> </ul>
<b>Special features</b>	<ul style="list-style-type: none"> <li>■ Low pressure version</li> <li>■ High pressure version</li> </ul>	<ul style="list-style-type: none"> <li>■ Low pressure version</li> <li>■ High pressure version</li> <li>■ Combined test benches</li> <li>■ Application specific test benches</li> </ul>	<ul style="list-style-type: none"> <li>■ Sophisticated calibration tasks possible</li> <li>■ High degree of automation possible</li> <li>■ Calibration software incl. certificate preparation</li> </ul>
<b>Data sheet</b> www.wika.com	CT 91.41	CT 91.11	



Designation	Hand-Held Thermometer	Precision Hand-Held Thermometer
<b>Model</b>	CTH6200	CTH6500 CTH6510 (ATEX Version)
<b>Application</b>	Flexible temperature measuring or data recording	Accurate temperature measuring (on-site or in a laboratory)
<b>Temperature range</b>	-50 ... +250 °C	-200 ... +850 °C (Pt100, Ex) -200 ... +1760 °C (TC)
<b>Accuracy</b>	< 200 mK optional: < 50 mK	30 ... 50 mK for -200 ... +200 °C, above 200 °C: 0.1 % of reading (Pt100)
<b>Resolution</b>	0.01 K up to 200 °C, then 0.1 K	0.01 K up to 200 °C, then 0.1 K
<b>Probes</b>	Pt100	Pt100 and TCs: K, J, L, N, T, S and R
<b>Special features</b>	<ul style="list-style-type: none"> <li>■ 2-row LCD-display (second row for: Min, Max and Hold-function)</li> <li>■ Data logger</li> <li>■ Data logger evaluation software available</li> <li>■ Incl. factory calibration</li> </ul>	<ul style="list-style-type: none"> <li>■ Large LCD-display with bargraph</li> <li>■ RTDs and TCs can be connected</li> <li>■ Second input optional</li> <li>■ Software „SmartGraph“ available</li> <li>■ Incl. factory calibration</li> <li>■ Explosion proof Hand-Held Thermometer with ATEX</li> </ul> <div>  </div>
<b>Data sheet</b> www.wika.com	CT 51.01	CT 55.10



Designation	Micro Calibration Bath Industrial Version	Temperature Dry Well Calibrators Industrial Version	Temperature Dry Well Calibrators Precision Version
<b>Model</b>	CTB9100-165 CTB9100-225	CTD9100-165 CTD9100-450 CTD9100-650	CTD9300-165 CTD9300-650
<b>Application</b>	<ul style="list-style-type: none"> <li>■ On-site calibration and laboratory calibration for short temperature sensors</li> <li>■ Calibration of thermometers with larger diameters</li> <li>■ Simultaneous calibration of several temperature sensors</li> </ul>	<ul style="list-style-type: none"> <li>■ On-site calibration in the industry</li> <li>■ Quality assurance and tests</li> <li>■ Simultaneous calibration of several temperature sensors</li> </ul>	<ul style="list-style-type: none"> <li>■ On-site calibration and calibration in laboratories</li> <li>■ Safety-relevant and precision calibrations</li> <li>■ Adjustment of temperature transmitters</li> </ul>
<b>Temperature range</b>	-30 ... +165 °C 40 ... 225 °C	-30 ... +165 °C 40 ... 450 °C 40 ... 650 °C	-30 ... +165 °C 40 ... 650 °C
<b>Accuracy</b>	0.2 ... 0.3 K	0.15 K ... 0.25 K 0.30 K ... 0.50 K 0.30 K ... 0.80 K	0.10 K ... 0.16 K 0.10 K ... 0.65 K
<b>Stability</b>	± 0.05 K	± 0.05 K ± 0.05 K ± 0.05 ... 0.1 K	± 0.01 ... 0.05 K ± 0.03 ... 0.1 K
<b>Immersion depth</b>	150 mm	150 mm	150 mm
<b>Special features</b>	<ul style="list-style-type: none"> <li>■ Easy handling</li> <li>■ Fast heating and cooling</li> <li>■ Adjustable agitator</li> <li>■ RS-485 interface</li> <li>■ Optional: Interface converter and software</li> <li>■ Optional: DKD Calibration certificate</li> <li>■ Incl. factory calibration</li> </ul>	<ul style="list-style-type: none"> <li>■ Easy handling</li> <li>■ Short response time</li> <li>■ High flexibility</li> <li>■ RS-485 interface</li> <li>■ Optional: Interface converter and software</li> <li>■ Optional: DKD Calibration certificate</li> <li>■ Incl. factory calibration</li> </ul>	<ul style="list-style-type: none"> <li>■ Comfortable, multilingual user interface</li> <li>■ Large, easy-to-read display</li> <li>■ Step-by-step programming</li> <li>■ RS-232 interface and software</li> <li>■ Optional: Integrated measuring instrument for TC, Pt- and mA signals with data logger function and switch test</li> <li>■ Optional: DKD Calibration certificate</li> <li>■ Incl. factory calibration</li> </ul>
<b>Data sheet</b> www.wika.com	CT 46.30	CT 41.28	CT 41.38



Designation	Temperature Calibration Bath	Temperature Calibration Bath
<b>Model</b>	CTB9210 CTB9220	CTB9430 CTB9441
<b>Application</b>	Calibration and testing of industrial thermometers	Calibration and testing of industrial thermometers
<b>Temperature range</b>	30 ... 250 °C	CTB 9430: -30 ... +200 °C CTB 9441: -40 ... +150 °C
<b>Stability</b>	± 10 mK at 70 °C with water	± 10 mK at 70 °C with water
<b>Uniformity</b>	≤ 10 mK	≤ 10 mK
<b>Immersion depth</b>	200 mm	200 mm
<b>Bath volume</b>	CTB9210: 7 Litre CTB9220: 12 Litre	CTB9430: 12 Litre CTB9441: 15 Litre
<b>Media</b>	Water, oil and similar media	Water, oil and similar media
<b>Special features</b>	<ul style="list-style-type: none"> <li>■ Pumped liquid bath</li> <li>■ Fuzzy-control</li> <li>■ Large graphic display</li> <li>■ Multilingual user guidance</li> <li>■ Pump control</li> <li>■ Level control</li> <li>■ Outlet for external vessels</li> <li>■ RS-232 interface</li> </ul>	<ul style="list-style-type: none"> <li>■ Pumped liquid bath</li> <li>■ Fuzzy-control</li> <li>■ Large graphic display</li> <li>■ Multilingual user guidance</li> <li>■ Pump control</li> <li>■ Level control</li> <li>■ Outlet for external vessels</li> <li>■ RS-232 interface</li> </ul>
<b>Data sheet</b> www.wika.com	CT 46.10*	CT 46.20*

\* Data Sheet in preparation.



Designation	Portable Service Unit Hand-Held Cases	Mobile Calibration Systems
<b>Application</b>	<ul style="list-style-type: none"> <li>■ Calibrations service companies</li> <li>■ Maintenance and service facilities</li> <li>■ Quality assurance facilities</li> </ul>	<ul style="list-style-type: none"> <li>■ Calibrations service companies</li> <li>■ Maintenance and service facilities</li> <li>■ Quality assurance facilities</li> </ul>
<b>Accuracy</b> (Pressure)	0.2 % up to 0.025 %	up to 0.008 %
(Temperature)	0.2 K up to 0.05 K	up to 0.05 K
<b>Pressure range</b>	0 ... 100 mbar up to 0 ... 1000 bar	customised
<b>Temperature range</b>	up to -199.9 ... +1350 °C	customised
<b>Pressure generation</b>	via test pump or spindle pump	via gas bottle
<b>Special features</b>	<ul style="list-style-type: none"> <li>■ Calibration of pressure / temperature instruments on-site</li> <li>■ Pressure switch test</li> <li>■ Leak testing</li> <li>■ Testing of process pressure / temperature</li> <li>■ Very mobile device</li> <li>■ Factory calibration incl.</li> </ul>	<ul style="list-style-type: none"> <li>■ Comfortable calibration of pressure instruments</li> <li>■ Mobile system</li> <li>■ System can be automated</li> </ul>
<b>Data sheet</b> <a href="http://www.wika.com">www.wika.com</a>	CT 11.01 (Pressure) CT 15.01 (Pressure; precise) CT 51.01 (Temperature) CT 55.10 (Temperature; precise)	

WIKA can supply a wide range of service tools, which are listed in a special service tools catalog. This catalog provides information on tools and devices required for the adjustment and calibration of pressure and temperature measuring instruments.

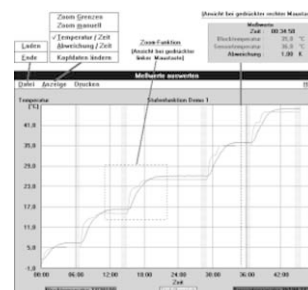
For further information just ask for the service tools catalog (Contact address on last page) or refer to [www.wika.de](http://www.wika.de).



Designation	Calibration software EasyCal 32	
<b>Application</b>	Calibration and testing laboratories as well as measurement and control workshops.	
<b>Special features</b>	Computer-assisted data acquisition as well as to generate factory calibration certificates and archiving of calibration data.	
<b>Description</b>	<ul style="list-style-type: none"> <li>■ Calibration assistant that guides through a calibration</li> <li>■ Automatic generation of calibration steps according to EN 837-1</li> <li>■ Certificates in accordance with EN 10 204 - 3.1</li> <li>■ Archiving of calibration data as well as instrument administration via Access database</li> <li>■ Customised test protocol possible (Access Report-Designer)</li> <li>■ Assisted fully automatic calibrations (Keithlex Interface-Board-(IEC) necessary)</li> </ul>	
<b>Remark</b>	Easy to use software for actual operating systems.	
<b>Data sheet</b> <a href="http://www.wika.com">www.wika.com</a>	CT 95.01	



Designation	Calibration software ThermoCal	
<b>Application</b>	Calibration and testing laboratories as well as measurement and control workshops.	
<b>Special features</b>	Computer-assisted data acquisition as well as to generate factory calibration certificates, statistical evaluation and archiving of calibration data.	
<b>Description</b>	Calibration software for automatic calibrations of RTD's and TC's with dry well.	
<b>Remark</b>	Easy to use software for actual operating systems.	





# Calibration and Service-Center in Germany

## Everything from one supplier

Your competent partner for calibration and maintenance of pressure and temperature measuring instruments.



High-grade standards for calibration of any pressure measuring instruments.



Calibration of thermometers and dry well calibrators.



Qualified service for all products.



Calibration and repair directly on-site.



Consulting regarding testing and calibration technology.



Individual training in testing and calibration technology and service.

## Range of services provided by our DKD Calibration laboratories in Germany

Designation	DKD Calibration laboratory for pressure	DKD Calibration laboratory for temperature
<b>Calibration range</b>	-1 bar ... 5000 bar	-196 °C ... 1200 °C
<b>Uncertainty</b>	Up to $4.5 \times 10^{-5}$ depending on range and device under test	2 mK up to 1.5 K depending on range and probe
<b>Method of Calibration</b>	Conforming to the up-to-date guidelines and directives e.g. DKD-R6-1 and DIN EN 837	Comparison measurement according to current DKD-guidelines and at tripplepoint of water
<b>Calibration of:</b>	<ul style="list-style-type: none"> <li>■ Mechanical and electrical pressure gauges</li> <li>■ Precision pressure gauges and controllers</li> <li>■ Pressure balances incl. mass determination</li> </ul>	<ul style="list-style-type: none"> <li>■ Temperature probes with or without transmitters</li> <li>■ RTD's</li> <li>■ Dial indicating thermometers</li> <li>■ Dry well calibrators</li> <li>■ Precious and unprecious metal - thermocouples as well as: Calculations of thermometer constants and generation of individual basic ranges</li> </ul>

## Europe

### Austria

WIKA Messgerätevertrieb  
Ursula Wiegand  
GmbH & Co. KG  
1230 Wien  
Phone: (+43) 1-86 91 631  
Fax: (+43) 1-86 91 634  
E-mail: info@wika.at  
www.wika.at

### Benelux

WIKA Benelux  
6101 WX ECHT  
Phone: (+31) 475-535 500  
Fax: (+31) 475-535 446  
E-mail: info@wika.nl  
www.wika.nl

### Bulgaria

WIKA Bulgaria EOOD  
1309 Sofia  
Phone: (+359) 2 82138-10  
Fax: (+359) 2 82138-13  
E-Mail: t.antonov@wika.bg

### Finland

WIKA Finland Oy  
00210 Helsinki  
Phone: (+358) 9-682 49 20  
Fax: (+358) 9-682 49 270  
E-mail: info@wika.fi  
www.wika.fi

### France

WIKA Instruments s.a.r.l.  
95610 Eragny-sur-Oise  
Phone: (+33) 1-34 30 84 84  
Fax: (+33) 1-34 30 84 94  
E-mail: info@wika.fr  
www.wika.fr

### Germany

WIKA  
Alexander Wiegand  
GmbH & Co. KG  
63911 Klingenberg  
Phone: (+49) 93 72-13 20  
Fax: (+49) 93 72-13 24 06  
E-mail: info@wika.de  
www.wika.de

### Italy

WIKA Italiana SRL  
20020 Arese (Milano)  
Phone: (+39) 02-93 86 11  
Fax: (+39) 02-93 86 174  
E-mail: info@wika.it  
www.wika.it

## Poland

Kujawska Fabryka Manometrow  
-KFM S.A.  
87-800 Wloclawek  
Phone: (+48) 542 30 11 00  
Fax: (+48) 542 30 11 01  
E-mail: gawel@manometry.com.pl  
www.manometry.com.pl

## Russia

ZAO „WIKa MERA“  
127015 Moskau  
Phone: (+7) 495-786 21 25  
Fax: (+7) 495-786 21 23  
E-mail: info@wika.ru  
www.wika.ru

## Serbia and Montenegro

WIKa Merna Tehnika d.o.o.  
11060 Belgrad  
Phone: (+381) 11 27 63 722  
Fax: (+381) 11 75 36 74  
Mail: info@wika.co.yu  
www.wika.co.yu

## Spain

Instrumentos WIKa, S.A.  
08280 Sabadell (Barcelona)  
Phone: (+34) 90-290 25 77  
Fax: (+34) 93-393 86 66  
E-mail: info@wika.es  
www.wika.es

## Switzerland

MANOMETER AG  
6285 Hitzkirch  
Phone: (+41) 41-919 72 72  
Fax: (+41) 41-919 72 73  
E-mail: info@manometer.ch  
www.manometer.ch

## Ukraine

WIKa Pribor GmbH  
83016 Donetsk  
Phone: (+38) 062 345 34 16  
Fax: (+38) 062 345 34 16  
E-mail: info@wika.donetsk.ua

## United Kingdom

WIKa Instruments Ltd  
Merstham, Redhill RH13LG  
Phone: (+44) 17 37 64 40 08  
Fax: (+44) 17 37 64 44 03  
E-mail: info@wika.co.uk  
www.wika.co.uk

## North America

### Canada

WIKa Instruments Ltd.  
Head Office  
Edmonton, Alberta, T6N 1C8  
Phone: (+1) 780-463 70 35  
Fax: (+1) 780-462 00 17  
E-mail: info@wika.ca  
www.wika.ca

WIKa Instruments Canada Ltd.  
Oakville, Ontario, L6H-6Z8  
Phone: (+1) 905-337 16 11  
Fax: (+1) 905-337 27 16  
E-mail: info@wika.ca  
www.wika.ca

## Mexico

Instrumentos WIKa Mexico S.A.  
de C.V.  
01219 Mexico D.F.  
Phone: (+52) 555 020 53 00  
Fax: (+52) 555 020 53 01  
E-Mail ventas@wika.com.mx  
www.wika.com.mx

## USA

WIKa Instrument Corporation  
Lawrenceville, GA 30043  
Phone: (+1) 770-513 82 00  
Fax: (+1) 770-338 51 18  
E-mail: info@wika.com  
www.wika.com

## South America

### Argentina

WIKa Argentina S.A.  
Buenos Aires  
Phone: (+54-11) 4730 18 00  
Fax: (+54-11) 4761 00 50  
E-mail: info@wika.com.ar  
www.wika.com.ar

### Brazil

WIKa do Brasil Ind. e Com.  
Ltda.  
CEP 18560-000 Iperó - SP  
Phone: (+55) 15-3266 16 55  
Fax: (+55) 15-3266 16 50  
E-mail: marketing@wika.com.br  
www.wika.com.br

## Africa/Middle East

### Iran

WIKa Instrumentation Pars  
(KFZ) Ltd.  
Anahita Tower, Tehran  
Phone: (+98-21) 8878 3514-17  
Fax: (+98-21) 8887 8593  
E-mail: info@wika.ir  
www.wika.ir

## South Africa

WIKa Instruments (Pty.) Ltd.  
Gardenvue, Johannesburg  
2047  
Phone: (+27) 11-621 00 00  
Fax: (+27) 11-621 00 59  
E-mail: sales@wika.co.za  
www.wika.co.za

## United Arab Emirates

WIKa Middle East FZE  
Jebel Ali, Dubai  
Phone: (+971) 4 - 883 90 90  
Fax: (+971) 4 - 883 91 98  
E-mail: wikame@emirates.net.ae

## Asia

### China

WIKa International Trading  
(Shanghai) Co., Ltd.  
200001 Shanghai  
Phone: (+86) 21 - 53 85 25 73  
Fax: (+86) 21 - 53 85 25 75  
E-mail: wikash@online.sh.cn

### WIKa Instrumentation

(Suzhou) Co., Ltd.  
215011 Suzhou  
Phone: (+86) 512 - 68 25 98 41  
Fax: (+86) 512 - 68 25 44 62  
E-mail: wika@sz.js.cn

### India

WIKa Instruments India Pvt. Ltd.  
Village Kesnand, Wagholi  
Pune - 412 207  
Phone: (+91) 20 - 27 05 29 01  
Fax: (+91) 20 - 27 05 19 25  
E-mail: sales@wika.co.in  
www.wika.co.in

### Japan

WIKa Japan K. K.  
Tokyo 105-0023  
Phone: (+81) 3-54 39 66 73  
Fax: (+81) 3-54 39 66 74  
E-mail: t-shimane@wika.co.jp

## Kazakhstan

TOO WIKa Kazakhstan  
050050 Almaty  
Phone: (+7) 32 72 33 08 48  
Fax: (+7) 32 72 78 99 05  
E-mail: wika-kazakhstan@nursat.kz

## Korea

WIKa Korea Ltd.  
Seoul 153-023  
Phone: (+82) 2 - 8 69 05 05  
Fax: (+82) 2 - 8 69 05 25  
E-mail: info@wika.co.kr

## Malaysia

WIKa Instrumentation (M) Sdn.  
Bhd.  
Selangor Darul Ehsan  
Phone: (+60) 3 - 56 36 88 58  
Fax: (+60) 3 - 56 36 90 72  
E-mail: info@wika.com.my  
www.wika.com.my

## Singapore

WIKa Instrumentation Pte. Ltd.  
569625 Singapore  
Phone: (+65) 68 44 55 06  
Fax: (+65) 68 44 55 07  
E-mail: info@wika.com.sg  
www.wika.com.sg

## Taiwan

WIKa Instrumentation Taiwan  
Ltd.  
Pinjen, Taoyuan  
Phone: (+886) 034 20 60 52  
Fax: (+886) 034 90 00 80  
E-mail: info@wika.com.tw  
www.wika.com.tw

## Australia

### Australia

WIKa Australia Pty. Ltd.  
Rydalmere, NSW 2116  
Phone: (+61) 2 - 88 45 52 22  
Fax: (+61) 2 - 96 84 47 67  
E-mail: sales@wika.com.au  
www.wika.com.au

WIKa Australia Pty. Ltd.  
Burwood East, VIC 3151  
Phone: (+61) 3 - 88 47 20 00  
Fax: (+61) 3 - 98 02 95 59  
E-mail: sales@wika.com.au  
www.wika.com.au

# Fax (+49) 93 72/132-406

Please send me information material

☐ WIKa Product Catalog on CD-ROM

☐ Product Review for product line: \_\_\_\_\_

☐ We request a visit by your field service

☐ Please give us a call

First Name, Name \_\_\_\_\_

Postal Code/City \_\_\_\_\_

Company \_\_\_\_\_

Country \_\_\_\_\_

Department \_\_\_\_\_

Phone \_\_\_\_\_

Fax \_\_\_\_\_

Street/Number \_\_\_\_\_

E-Mail \_\_\_\_\_

## WIKa Alexander Wiegand GmbH & Co. KG

Alexander-Wiegand-Straße 30 · 63911 Klingenberg · Germany  
Phone (+49) 93 72/132-9986 · Fax (+49) 93 72/132-217  
E-Mail info@wika.de · www.wika.de



 Part of your business